

S-AP ACOUSTIC WALL PANELS

CORE

6 - 7 pcf fiberglass
1/2" - 4" thick

SIZES

Up to 4' x 12' and 5' x 10'

MOUNTING

Adhesive, impaling clips,
two-part Z-clips

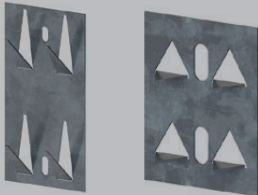
EDGES

Square, beveled or radiused

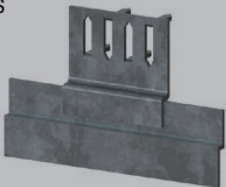
FLAMMABILITY

All components have a Class
"A" rating per ASTM E84

MOUNTING OPTIONS

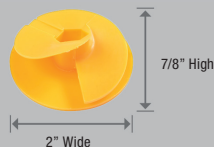


Angled & Straight Impaling Clips

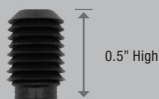


Z-Clip with Continuous Hanger Bar

Rotofast™ Snap-On Anchor



Fiberglass Anchor



Ratchet Plug



PRODUCT FEATURES

- Excellent Sound Absorption
- Economical Wall Panel
- Available in a Variety of Thicknesses
- Finishes: Fabric, Paint, Custom Printed and White or Black Texture
- Standard or Custom Shapes and Sizes

Hz	125	250	500	1000	2000	4000	NRC
S-AP.5	.07	.09	.35	.77	.98	1.03	.55
S-AP .75	.04	.19	.59	.91	1.05	1.05	.70
S-AP 1	.10	.25	.84	1.08	1.13	1.11	.85
S-AP 1.5	.31	.58	1.03	1.10	1.05	1.04	.95
S-AP 2	.42	.89	1.12	1.07	1.10	1.09	1.05
S-AP 3	.75	.89	1.11	1.21	1.21	1.20	1.10
S-AP 4	.87	.87	1.24	1.26	1.26	1.25	1.15

NOTE: NRC test results based on our standard acoustically transparent fabric.
Results may vary with other fabrics.

An Acoustical Design and Installation Company