

## Rotofast™ Snap-On Anchor Installation Guide

### PRODUCT

Acoustical Panel Anchor

### MATERIAL

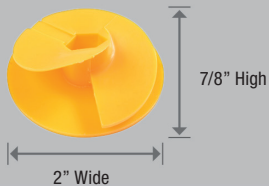
- Stabilized polypropylene plastic.
- Non-reactive, will not chemically react with fiberglass binders.

### PULL-OUT STRENGTH

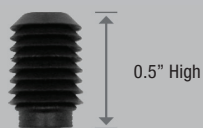
45lb in 6lb / ft3 rigid fiberglass board

### SIZES

Fiberglass Panel Anchor

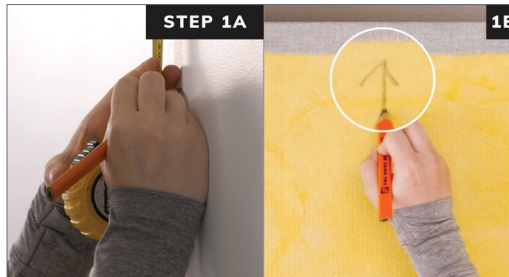


### Ratchet Plug



### TOOLS

Hex Tool and reusable Marking Plug



Measure and mark the location where panel will be placed and mark the orientation on the back of the panel.



Screw Rotofast Snap-On Anchors into back of the panel using the Rotofast driver tool. Do not over-tighten.



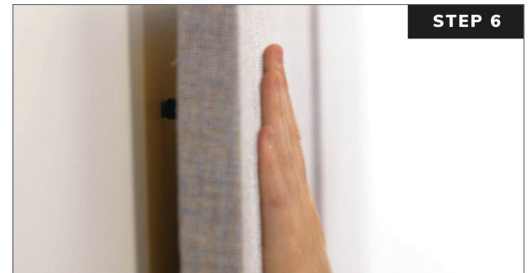
Insert reusable marking plugs into the Snap-On anchors.



Push panel against wall to mark anchor locations.



Screw ratchets to wall at marked locations. Flat end of ratchet goes against the wall, curved end faces out.



Firmly strike panel onto ratchets to complete the installation.

*An Acoustical Design and Installation Company*